



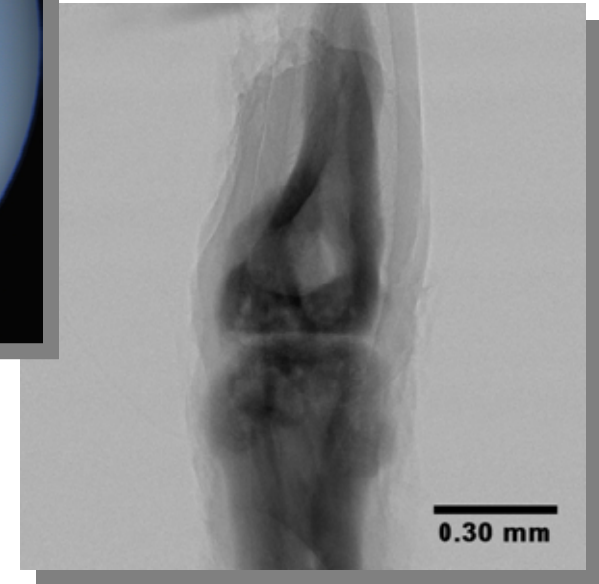
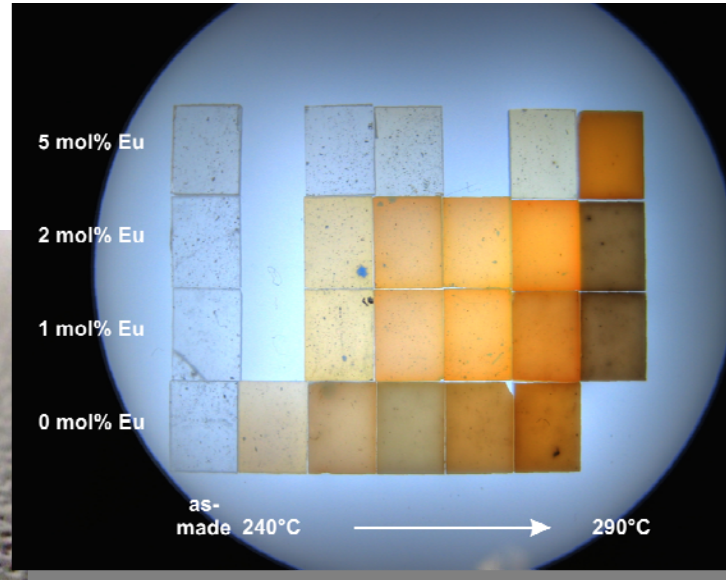
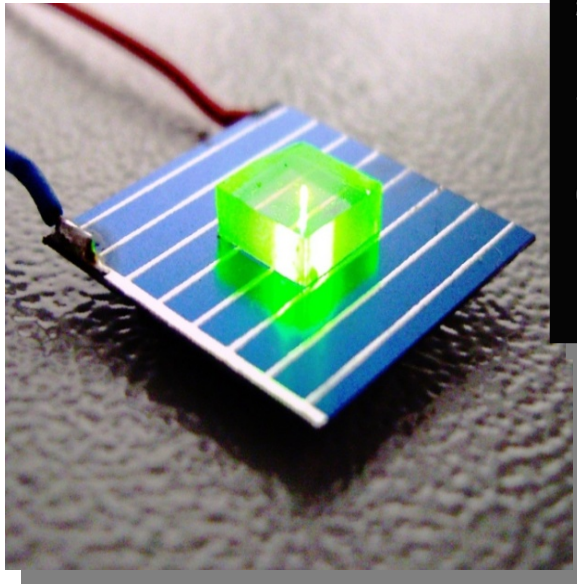
Forschungsthemen

Zentrum für Innovationskompetenz SiLi-nano®

Nachwuchsgruppe Light-to-Silicon

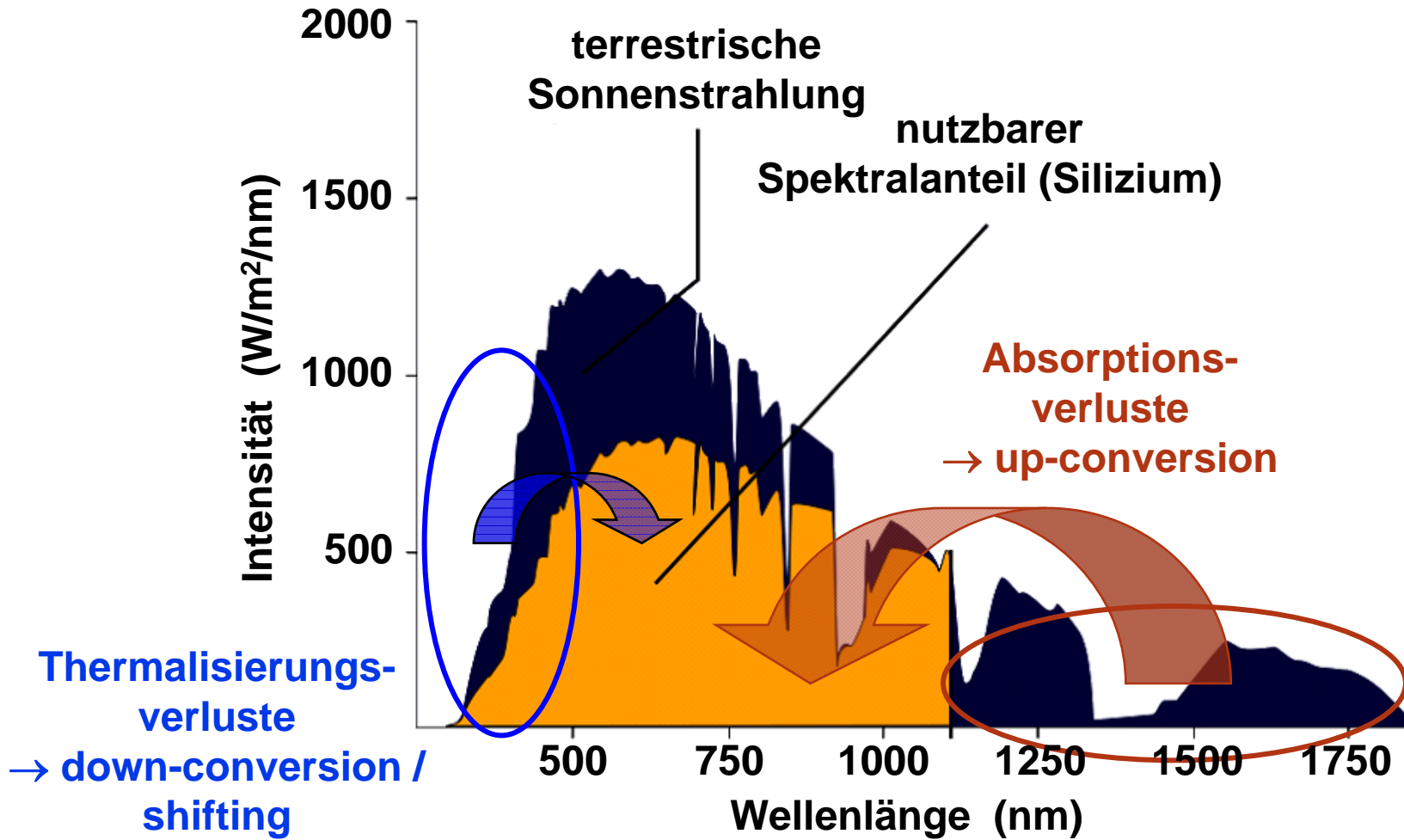
S. Schweizer

B. Ahrens, C. Bohley, M. Dyrba, B. Henke, M. Irrgang, S. Krause, M. Miclea, P.-T. Miclea, K. Mitzschke, C. Paßlick, C. Pfau, U. Skrzypczak, F. Steudel, M.-C. Wiegand

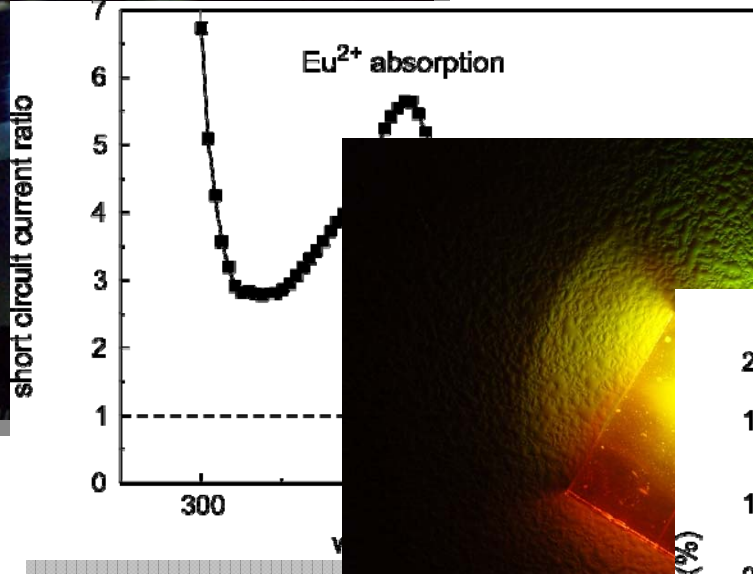
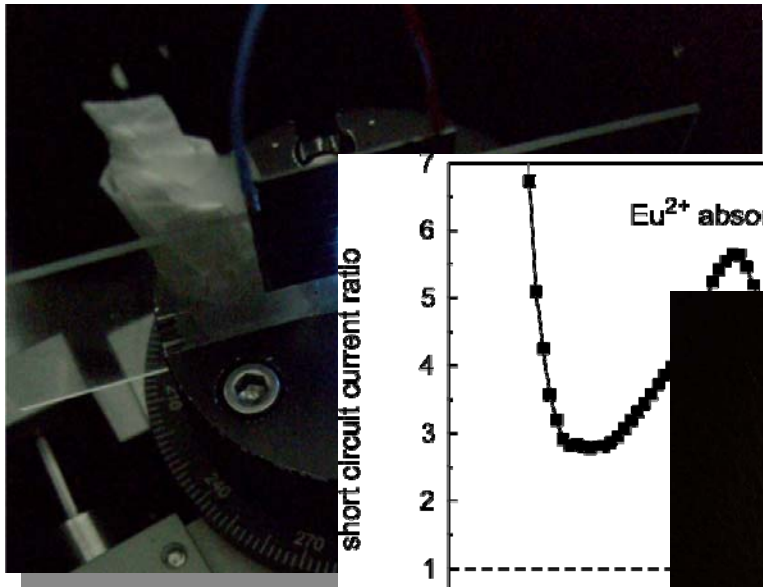


**Photonenmanagement
Photovoltaik**

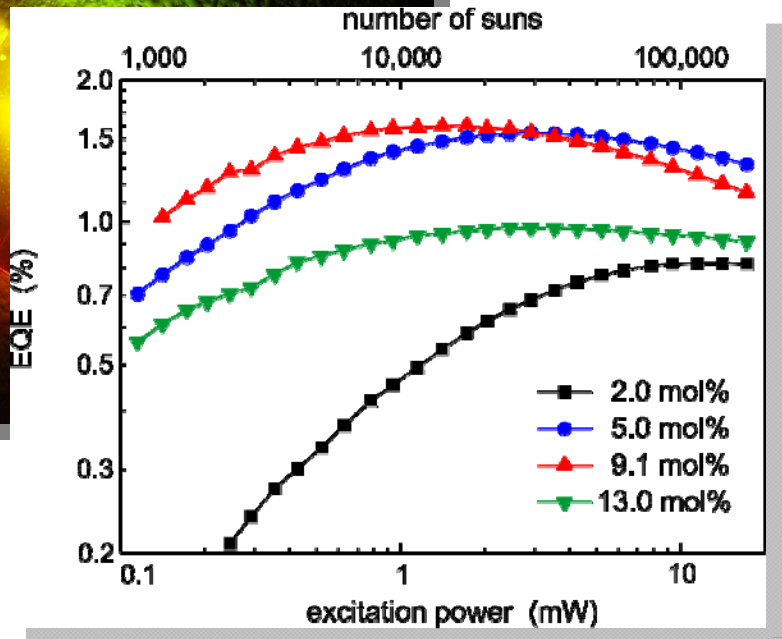
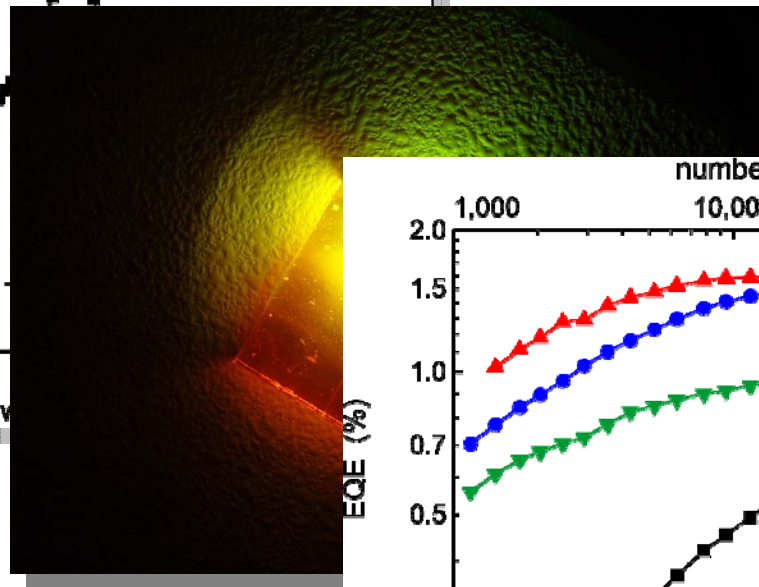
**Bildgebung
medizinische Diagnostik**

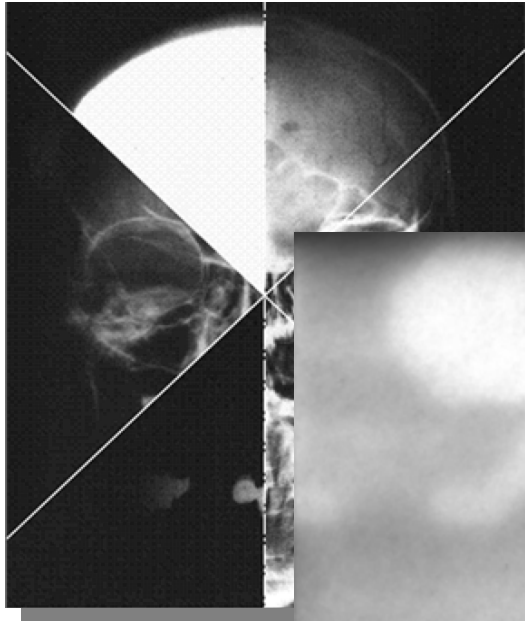


down-conversion

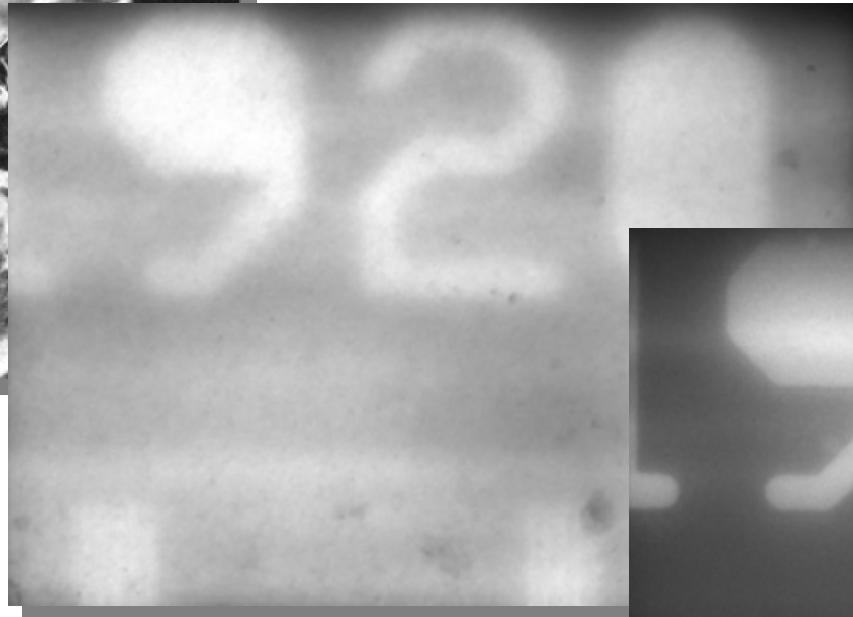


up-conversion





**Röntgen-
Speicherleuchtstoff**

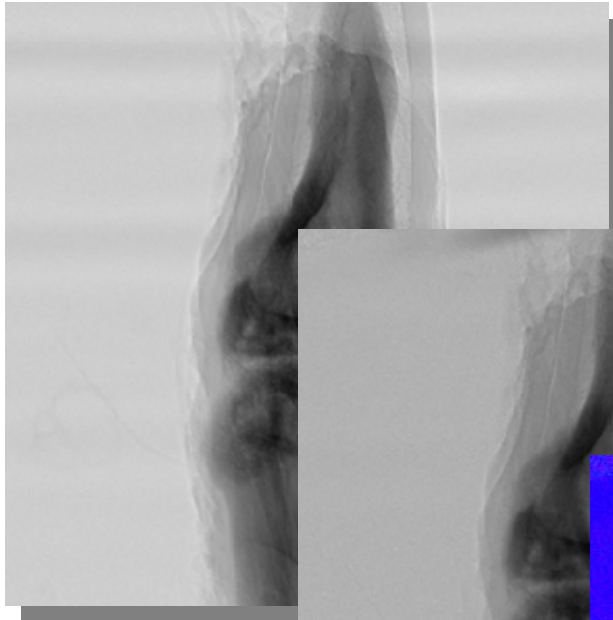


**kommerzieller
Speicherleuchtstoff**

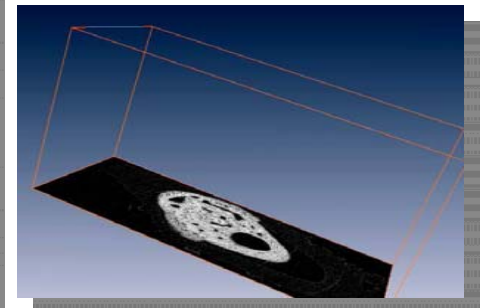
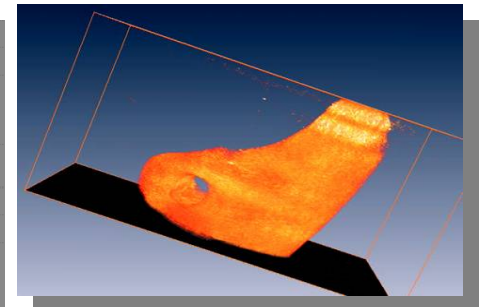
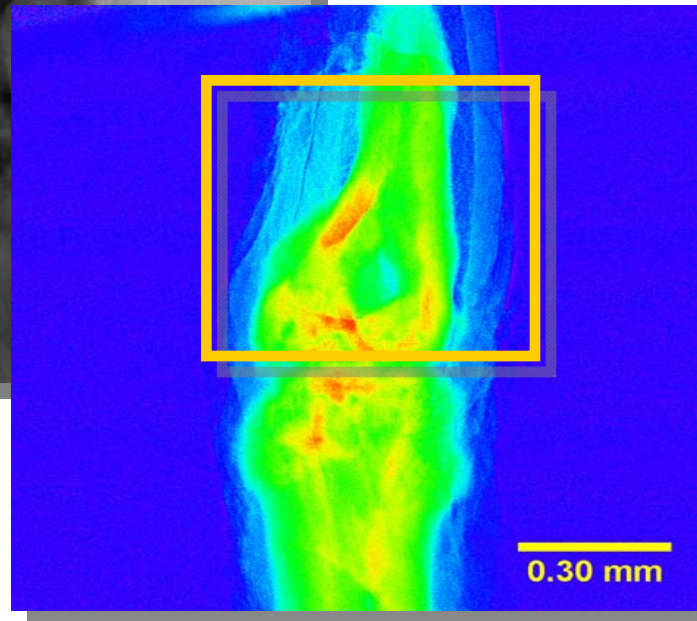


Glaskeramik

kommerzieller Röntgenzintillator



**Glaskeramik als
Röntgenzintillator**



Computertomographie

Zentrum für Innovationskompetenz SiLi-nano®
Martin-Luther-Universität Halle-Wittenberg
Karl-Freiherr-von-Fritsch-Str. 3
06120 Halle (Saale)

stefan.schweizer@physik.uni-halle.de
www.sili-nano.de

